



# Silver Hill

Crownhill, Plymouth

---

A superb collection of 3 bedroom shared ownership homes





## Welcome to **Silver Hill**

---

Plymouth Community Homes Regeneration Company Ltd and Halsall Homes Ltd have joined together to provide a superb collection of 38 homes, including 6 shared ownership homes and 5 affordable rented homes to suit the modern way of living in Crownhill.

Silver Hill offers 6 x 3 bedroom shared ownership homes with allocated parking.

Situated with a woodland outlook, adjacent to Whitleigh Woods nature reserve in the north of Plymouth. A perfect location for those looking to live in the city yet having a rural feel.

The location of Silver Hill offers convenience living as well as leisure and learning. In the local community, schooling from a primary to 6th form are offered

nearby Silver Hill with Crownhill Village and Transit Way a short distance for all your day to day needs.

In addition to local schooling Plymouth prides itself as a seat of learning with Plymouth University situated at the heart of the City and independent well established co-educational schools including Plymouth College and Kings School.

You are spoilt for choice with two nature reserves on your doorstep with the local gym just a few minutes' walk away.

# Site plan

**The Hill**  
3 Bedroom home  
Plots 15, 16, 17, 31, 32, 33

**Open Market**

**Rented**



**Disclaimer:** Development layouts and landscaping are not intended to form part of any contract or warranty unless specifically incorporated in writing into the contract. Images and development layouts are for illustration purposes and should be used for general guidance only. Development layouts including parking arrangements, private/social/affordable housing, play areas and public open spaces may change and are not intended to form part of any contract or warranty unless specifically incorporated in writing. Please speak to your Solicitor to whom full details of any planning consents including layout plans will be available. Silver Hill is a marketing name only and may not be the designated postal address.





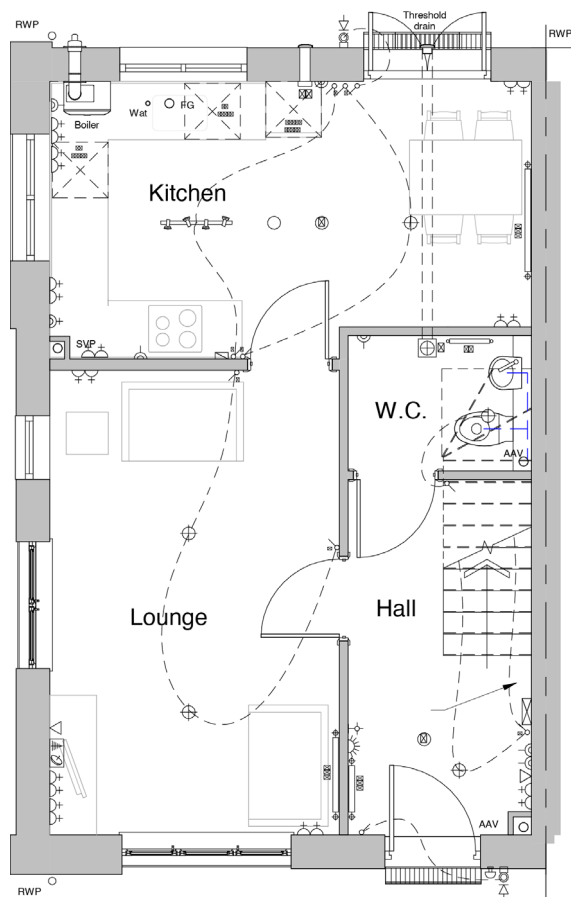
The Hill, 3 bedroom home



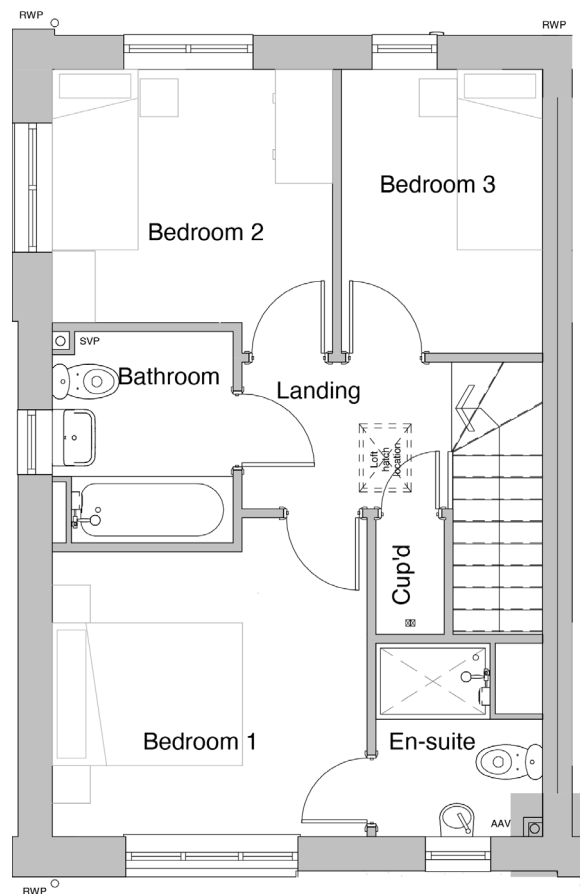
# The Hill

## 3 Bedroom home

Plots 15, 31 (OPP)16, 17, 32, 33 (AS)



Ground floor



First floor

### Ground floor

#### Lounge

3.33 x 5.04 m

#### Kitchen/ dining

5.16 x 3.03 m

### First floor

#### Bedroom 1

3.40 x 3.05 m

#### Bedroom 1 en-suite

2.15 x 2.85 m

#### Bedroom 2

2.35 x 3.00 m

#### Bedroom 3

2.35 x 3.10 m

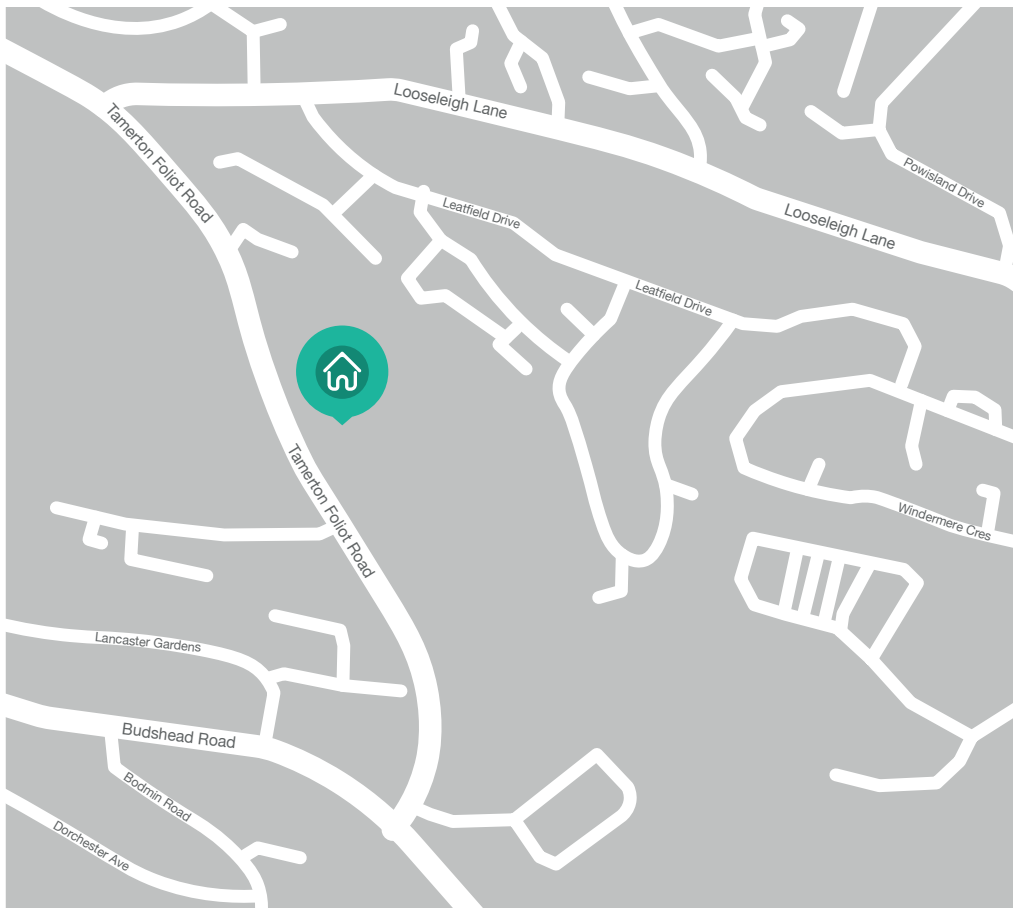
Total floor area 82.8m<sup>2</sup>

(Approximate dimensions)

\*Window may be omitted on certain plots. Speak to sales officer for details.

Abbreviations: AS - As shown on floor plan / OPP - opposite hand to floor plan. All images used are for illustration purposes.

**Disclaimer:** These and the dimensions given for this house type and individual properties may differ. Please check with your sales officer in respect of individual properties. We give maximum dimensions within each room which includes areas of fixtures and fittings. These dimensions should not be used for carpet or flooring sizes, appliances spaces or items of furniture. All images, photographs are not intended to be relied upon to form part of, any contract unless specifically incorporated in writing into the contract.



## How to find **Silver Hill**

Plymouth,  
Devon,  
PL6 5DT

SO Living. Plumer House,  
Crownhill, PL6 5DH

### **Opening times**

Monday - Thursday 9am - 5pm  
Friday - 9am - 4:30pm

 [so-living.co.uk](https://so-living.co.uk)

 0800 0778 748

 [so-living@pch.co.uk](mailto:so-living@pch.co.uk)

 [facebook.com/solvingplym](https://facebook.com/solvingplym)

 [twitter.co.uk/solvingplym](https://twitter.co.uk/solvingplym)

**SO Living is part of Plymouth's largest affordable housing provider, Plymouth Community Homes.**

For full terms and conditions, visit the SO Living website. Information correct at June 2023

