



Kestor Close, PL2 2LT

Available from £43,500

2 bedroom shared ownership home

Make the dream of home ownership a reality with shared ownership

2 bedrooms

Gas Central Heating

1 allocated parking space

Council Tax Band A

How much does it cost?

Full market value £145,000

Share 30%

Share price £43,500

Rent charge 287.84 p/m

Service charge £93.10 p/m

Rent charge and service charges as of April 2024.

The accommodation comprises...

Ground floor

Entrance hallway

Enter the front door into the hall that leads you to the rest of the property, access to storage cupboards and a utility cupboard which has plumbing for a washer/dryer.

Living room & Kitchen Diner

Open plan lounge and kitchen/diner. The kitchen is fitted with a range of base and eye level units, with integrated oven, hob and extractor fan. Stainless steel sink and drainer and space for fridge/ freezer. TV aerial point. Large PVCu doors leading to the terrace.





Bedroom 1

Main bedroom with a double-glazed window. TV aerial point.

Bedroom 2

Single bedroom with one double glazed window. TV aerial point.

Bathroom

White suite comprising bath, with partial tiles around the bath, electric shower and shower screen, wash hand basin and WC.

.....

Outside

Allocated parking for one vehicle and a terraced area.

.....



Lease details

Lease of 125 years from 1 January 2012



Builder Warranty

LABC warranty expired.

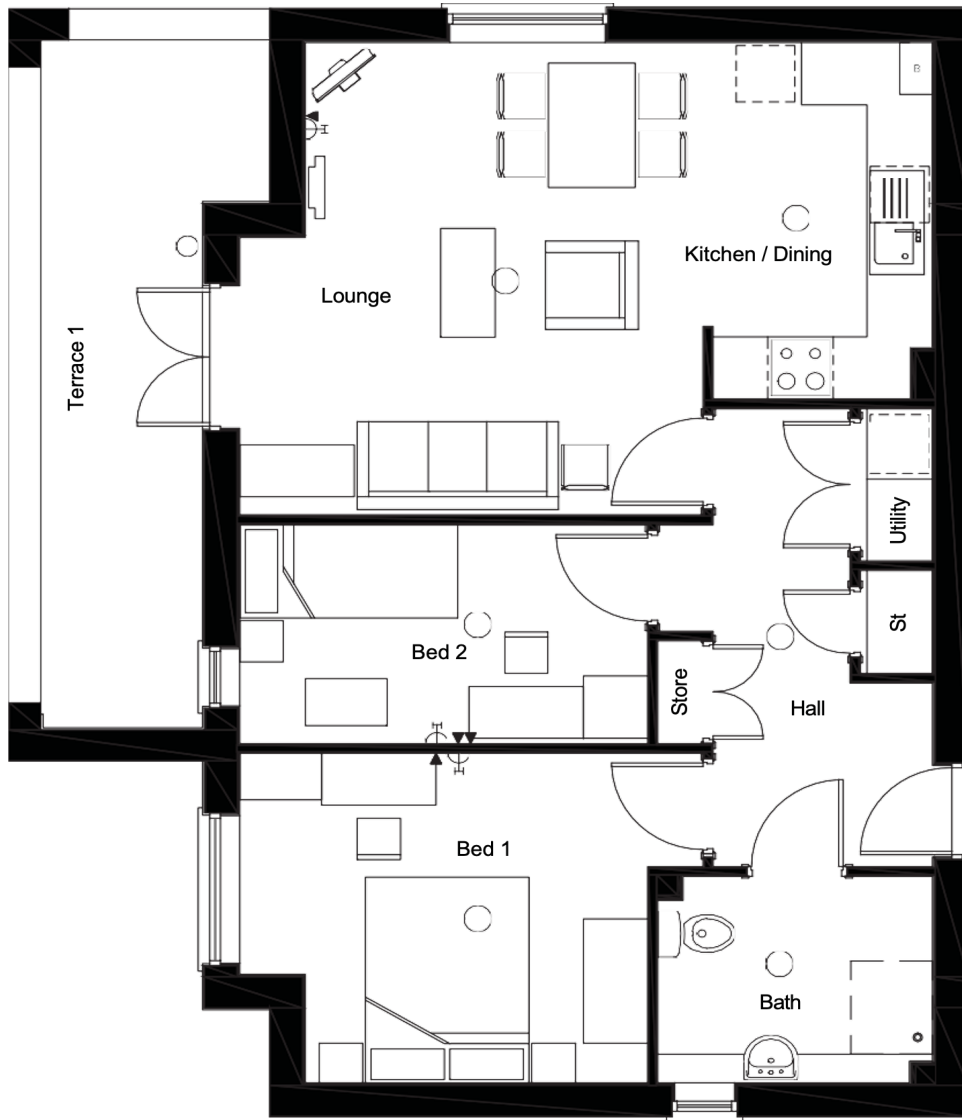
Energy Efficiency Rating

C



Score	Energy rating	Current	Potential
92+	A		
81-91	B		
69-80	C	80 C	80 C
55-68	D		
39-54	E		
21-38	F		
1-20	G		

Floorplan



Disclaimer: These particulars are issued in good faith and do not constitute representation or fact or form part of any contract or offer. These particulars should be independently verified by prospective buyers. Neither SO-Living, Plymouth Community Homes or any of its employees or agents has any authority to make or give any representation or warranty whatever in relation to this property, any floor plans are representation floor plans for visual purposes only. Please note that the size and position of objects such as doors and windows have not been measured and are not to scale. SO-Living/Plymouth Community Homes cannot be held responsible for inferences that may be drawn from these.

These particulars have been produced by SO Living on behalf of the vendor 12/11/2024

Apply now at www.so-living.co.uk

