



Woodland Walk

Sherford, Plymouth

A superb collection of 2, 3 and 4 bedroom Shared Ownership homes



Welcome to **Woodland Walk**

Woodland Walk is an exciting new collection of two, three and four bedroom homes situated in the new development of Sherford, available to purchase through shared ownership.

On the edge of Plymouth and nestled in the South Hams countryside, Sherford is a thriving new community that includes a perfect blend of abundant green space and quality homes. In addition to community spaces, Sherford will also have three

primary schools and a brand-new secondary school, making it a great location for growing families.

If you want to venture into the city, Plymouth is less than 7 miles away and has something for everyone, including retail, cafes and the famous Plymouth Hoe and Barbican.

Secure your new home in the developing town of Sherford with SO Living.

Site plan



Elmslie
3 Bedroom home
Plots 380-383, 410-414,
459-460, 462-465

Cartwright
2 Bedroom home
Plots 384-385

Aldridge
4 Bedroom home
Plots 415-416

Becket
3 Bedroom home
Plots 409, 461

PCH Rented

Non PCH Homes

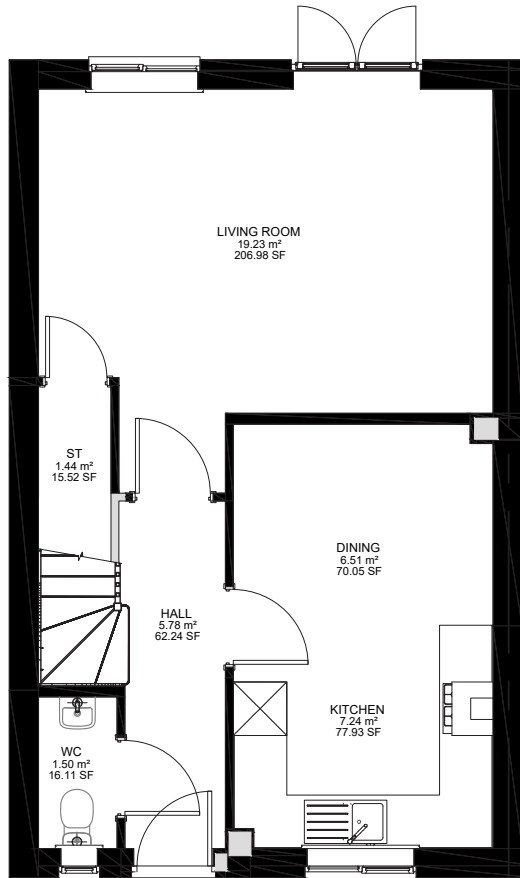
Disclaimer: Development layouts and landscaping are not intended to form part of any contract or warranty unless specifically incorporated in writing into the contract. Images and development layouts are for illustration purposes and should be used for general guidance only. Development layouts including parking arrangements, private/social/affordable housing, play areas and public open spaces may change and are not intended to form part of any contract or warranty unless specifically incorporated in writing. Please speak to your Solicitor to whom full details of any planning consents including layout plans will be available. Woodland Walk is a marketing name only and may not be the designated postal address.

ELMSLIE

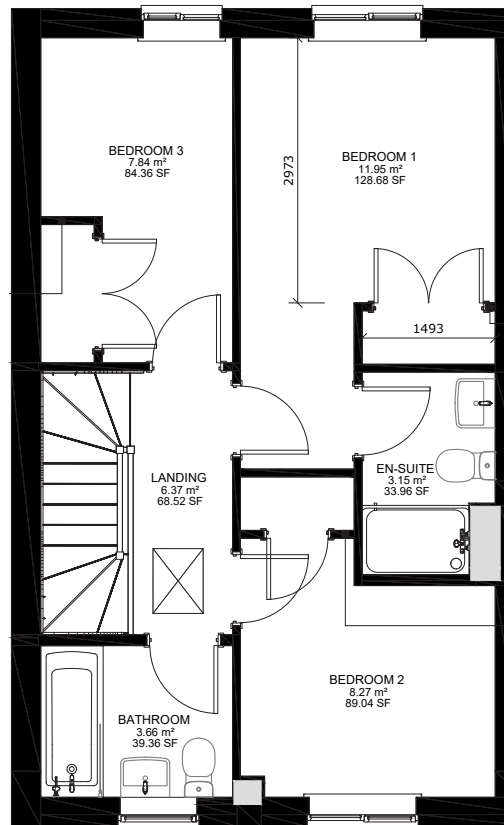


3 Bedroom home

Semi detached plots 380, 382,462, 464, 411, 413, 459 (AS),
381, 383, 463,465, 410, 412, 414,460 (OPP)



Ground floor



First floor

*Window may be omitted on certain plots. Speak to sales officer for details.

Abbreviations: AS - As shown on floor plan / OPP - opposite hand to floor plan. All images used are for illustration purposes.

Disclaimer: These and the dimensions given for this house type and individual properties may differ. Please check with your sales officer in respect of individual properties. We give maximum dimensions within each room which includes areas of fixtures and fittings. These dimensions should not be used for carpet or flooring sizes, appliances spaces or items of furniture. All images, photographs are not intended to be relied upon to form part of, any contract unless specifically incorporated in writing into the contract.

Ground floor

Lounge

5.10m x 3.64 m

Kitchen / Diner

2.91m x 4.76m

WC

1.7m x 0.88m

First floor

Bedroom 1

2.86m x 2.97m

Ensuite

2.27m x 1.49m

Bedroom 2

2.86m x 2.37m

Bedroom 3

2.15m x 3.65m

Bathroom

1.7m x 2.15m

Total floor area 86.7m²

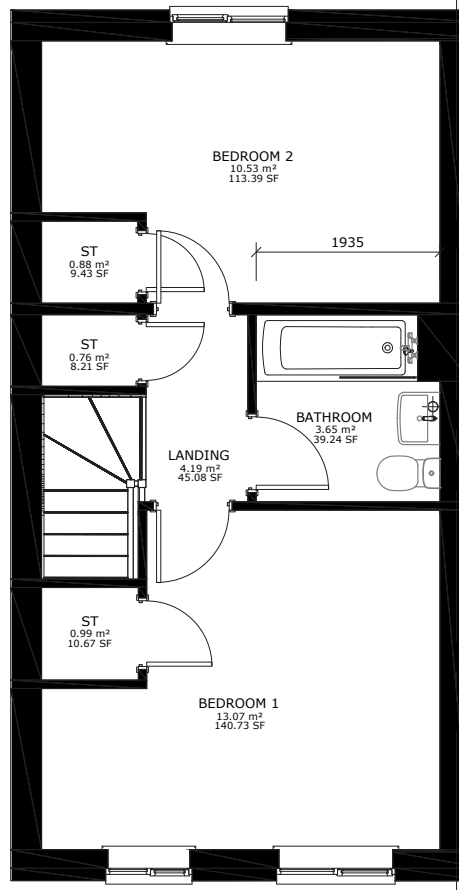
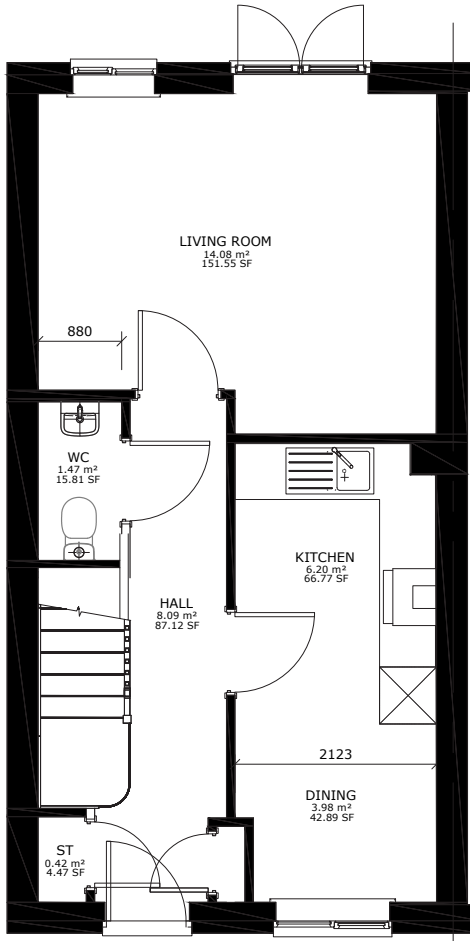
(Approximate dimensions)

CARTWRIGHT



2 Bedroom home

Semi detached plots 385 (AS), 384 (OPP)



Ground floor

First floor

*Window may be omitted on certain plots. Speak to sales officer for details.

Abbreviations: AS - As shown on floor plan / OPP - opposite hand to floor plan. All images used are for illustration purposes.

Disclaimer: These and the dimensions given for this house type and individual properties may differ. Please check with your sales officer in respect of individual properties. We give maximum dimensions within each room which includes areas of fixtures and fittings. These dimensions should not be used for carpet or flooring sizes, appliances spaces or items of furniture. All images, photographs are not intended to be relied upon to form part of, any contract unless specifically incorporated in writing into the contract.

Ground floor

Lounge
4.20m x 3.12m

Kitchen / Diner
2.12m x 4.84m

WC
1.7m x 0.88m

First floor

Bedroom 1
4.20m x 3.56m (max)

Bedroom 2
4.20m x 2.76m (max)

Bathroom
1.97m x 1.94m

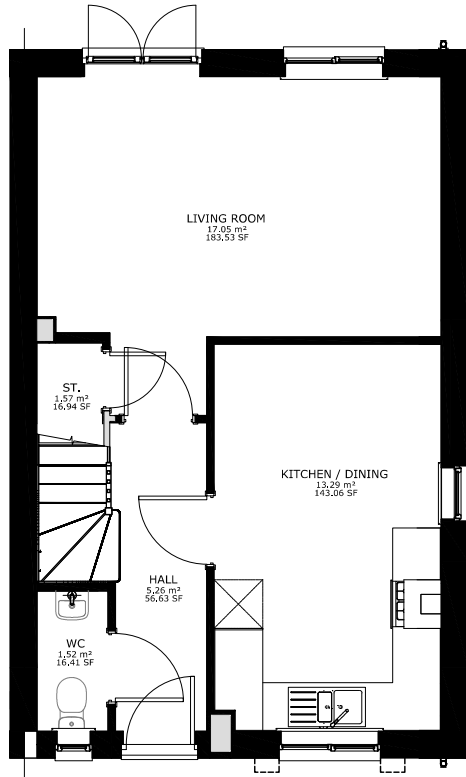
Total floor area 71m²
(Approximate dimensions)

ALDRIDGE

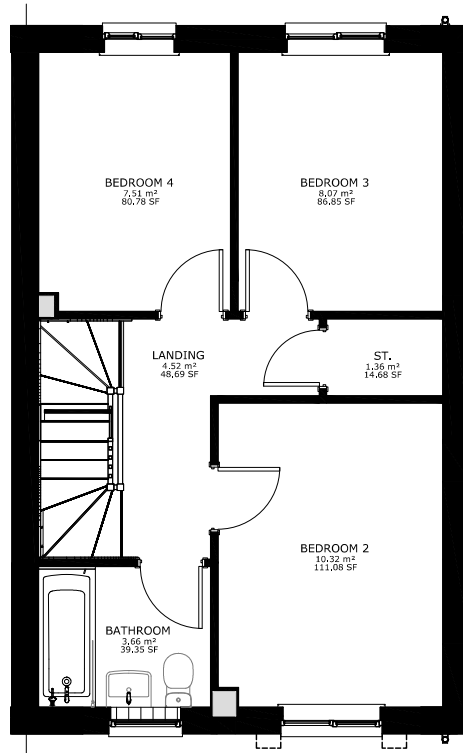


4 Bedroom home

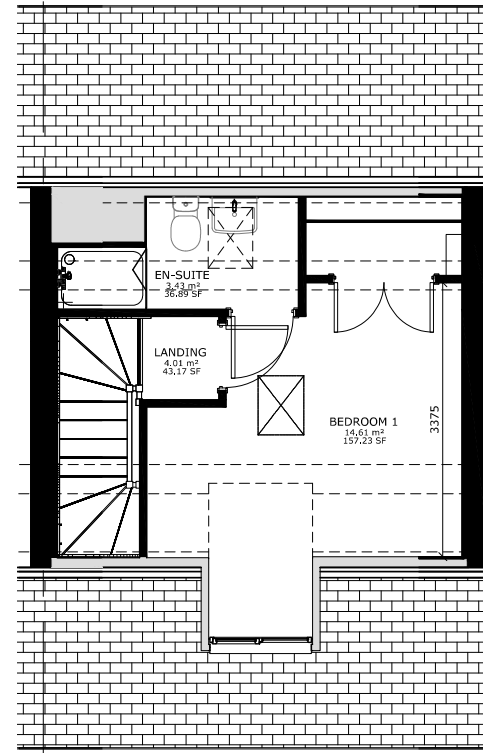
Semi detached plots 415 (AS), 416 (OPP)



Ground floor



First floor



Second floor

Ground floor

Lounge
4.98m x 3.21m

Kitchen / Diner
2.80m x 4.77m

WC
1.7m x 0.88m

First floor

Bedroom 1
2.94 m x 3.40m

Bedroom 2
2.77 m x 3.75m

Bedroom 3
3.19m x 2.53m

Bedroom 4
3.19m x 2.37m

Bathroom
1.73m x 2.12m

Total floor area 95m²

(Approximate dimensions)

*Window may be omitted on certain plots. Speak to sales officer for details.

Abbreviations: AS - As shown on floor plan / OPP - opposite hand to floor plan. All images used are for illustration purposes.

Disclaimer: These and the dimensions given for this house type and individual properties may differ. Please check with your sales officer in respect of individual properties. We give maximum dimensions within each room which includes areas of fixtures and fittings. These dimensions should not be used for carpet or flooring sizes, appliances spaces or items of furniture. All images, photographs are not intended to be relied upon to form part of, any contract unless specifically incorporated in writing into the contract.

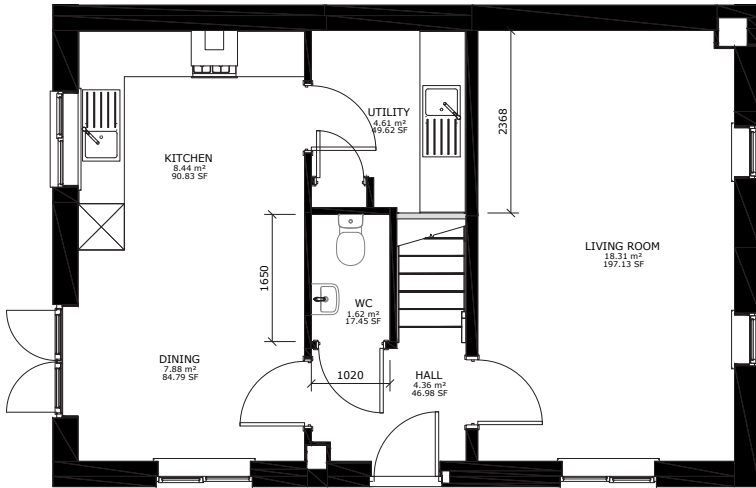
BECKET



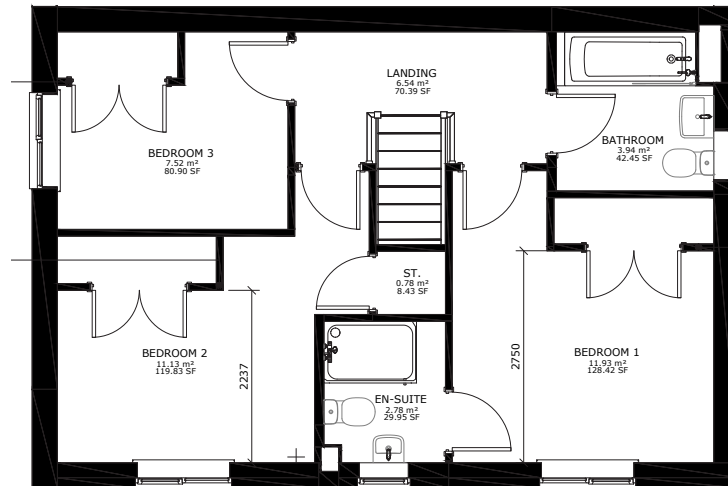
3 Bedroom home

Detached plots 461 (AS)

Semi detached plots 409 (OPP)



Ground floor



First floor

Ground floor

Lounge

3.33m x 5.59m

Kitchen / Diner

2.94 m x 5.65m

WC

1.02m x 1.65m

First floor

Bedroom 1

3.39m x 3.44m (max)

Ensuite

1.58m x 2.23m (max)

Bedroom 2

2.94 m x 4.9m (max)

Bedroom 3

2.56m x 2.99m

Bathroom

2.06m x 2.04m

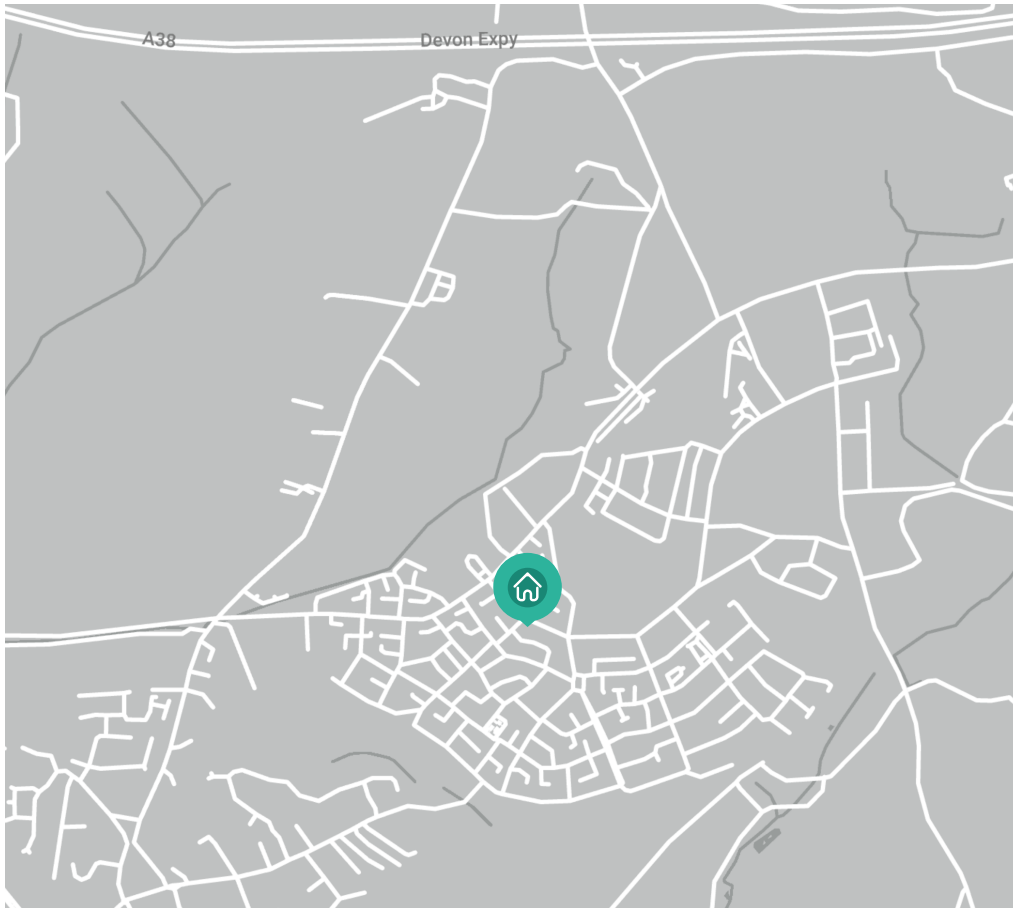
Total floor area 95m²

(Approximate dimensions)

*Window may be omitted on certain plots. Speak to sales officer for details.

Abbreviations: AS - As shown on floor plan / OPP - opposite hand to floor plan. All images used are for illustration purposes.

Disclaimer: These and the dimensions given for this house type and individual properties may differ. Please check with your sales officer in respect of individual properties. We give maximum dimensions within each room which includes areas of fixtures and fittings. These dimension should not be used for carpet or flooring sizes, appliances spaces or items of furniture. All images, photographs are not intended to be relied upon to form part of, any contract unless specifically incorporated in writing into the contract.



How to find **Woodland Walk**

Sherford Countryside 2D,
Aquila Drive,
Plymouth,
PL9 8WR

SO Living. Plumer House,
Crownhill, PL6 5DH

Opening times

Monday - Thursday 9am - 5pm
Friday - 9am - 4:30pm

 [so-living.co.uk](https://www.so-living.co.uk)

 0800 0778 748

 so-living@pch.co.uk

 [facebook.com/solvingplym](https://www.facebook.com/solvingplym)

 [x.com/solvingplym](https://www.x.com/solvingplym)

SO Living is part of Plymouth's largest affordable housing provider, Plymouth Community Homes.

For full terms and conditions, visit the SO Living website. Information correct at January 2025

