



Oak Green

Sherford, Plymouth

A superb collection of 2 and 3 bedroom shared ownership homes



Welcome to **Oak Green**

Oak Green is an exciting new collection of two and three bedroom homes situated in the new development of Sherford, available to purchase through shared ownership.

On the edge of Plymouth and nestled in the South Hams countryside, Sherford is a thriving new community that includes a perfect blend of abundant green space and quality homes. In addition to community spaces, Sherford will also have three

primary schools and a brand-new secondary school, making it a great location for growing families.

If you want to venture into the city, Plymouth is less than 7 miles away and has something for everyone, including retail, cafes and the famous Plymouth Hoe and Barbican.

Secure your new home in the developing town of Sherford with SO Living.

Site plan

- Egret**
 3 Bedroom home
 Plots 759, 776-778, 820-822

- Heron**
 3 Bedroom home
 Plots 823-824

- Fulmar**
 2 Bedroom home
 Plots 691-692, 727-730, 733-734, 843-845

- Dunlin**
 2 Bedroom home
 Plots 775

- PCH Rented**

- Non PCH Homes**



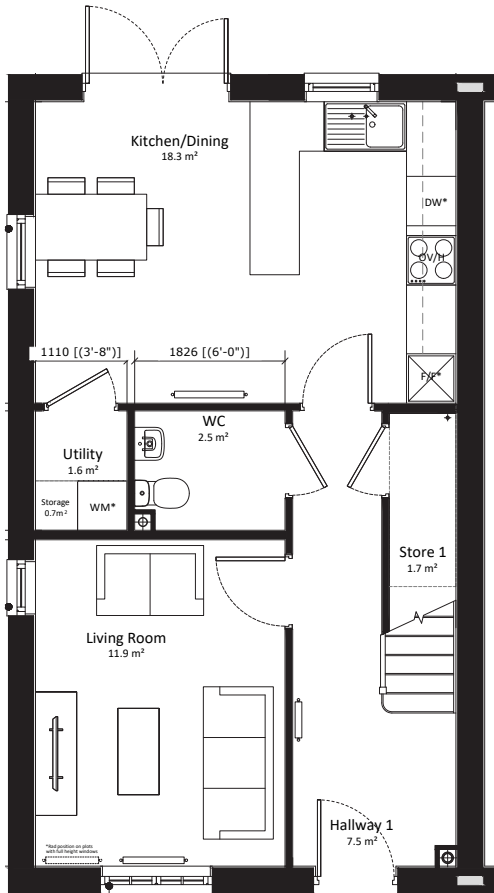
Disclaimer: Development layouts and landscaping are not intended to form part of any contract or warranty unless specifically incorporated in writing into the contract. Images and development layouts are for illustration purposes and should be used for general guidance only. Development layouts including parking arrangements, private/social/affordable housing, play areas and public open spaces may change and are not intended to form part of any contract or warranty unless specifically incorporated in writing. Please speak to your Solicitor to whom full details of any planning consents including layout plans will be available. Oak Green is a marketing name only and may not be the designated postal address.

EGRET

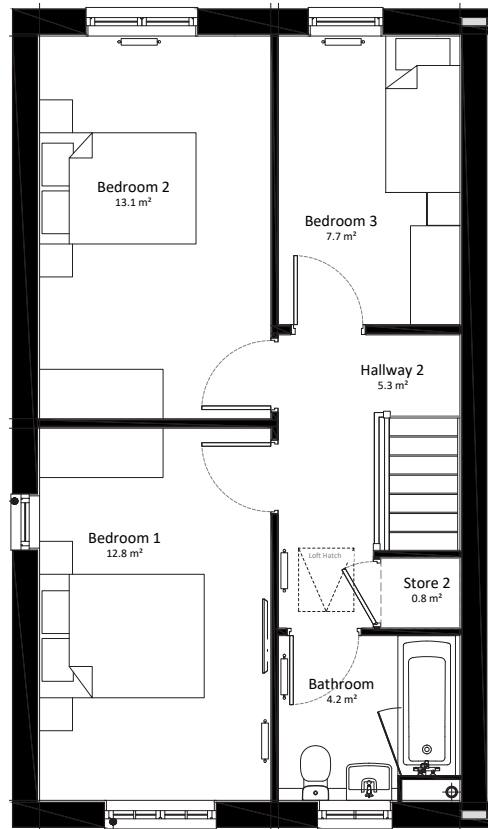


3 Bedroom home

Semi detached plots 759, 777 (AS), 776, 778 (OPP)
Terrace plots 820-822 (AS)



Ground floor



First floor

*Window may be omitted on certain plots. Speak to sales officer for details.

Abbreviations: AS - As shown on floor plan / OPP - opposite hand to floor plan. All images used are for illustration purposes.

Disclaimer: These and the dimensions given for this house type and individual properties may differ. Please check with your sales officer in respect of individual properties. We give maximum dimensions within each room which includes areas of fixtures and fittings. These dimensions should not be used for carpet or flooring sizes, appliances spaces or items of furniture. All images, photographs are not intended to be relied upon to form part of, any contract unless specifically incorporated in writing into the contract.

Ground floor

Lounge

3.07m x 4.01m

Kitchen / Dining

5.15m x 3.40m

WC

1.86m x 1.48m

Utility

1.15m x 1.48m

First floor

Bedroom 1

2.85m x 4.57m

Bedroom 2

2.85m x 4.69m

Bedroom 3

2.24m x 3.55m

Bathroom

2.24m x 2.04m

Total floor area 95m²

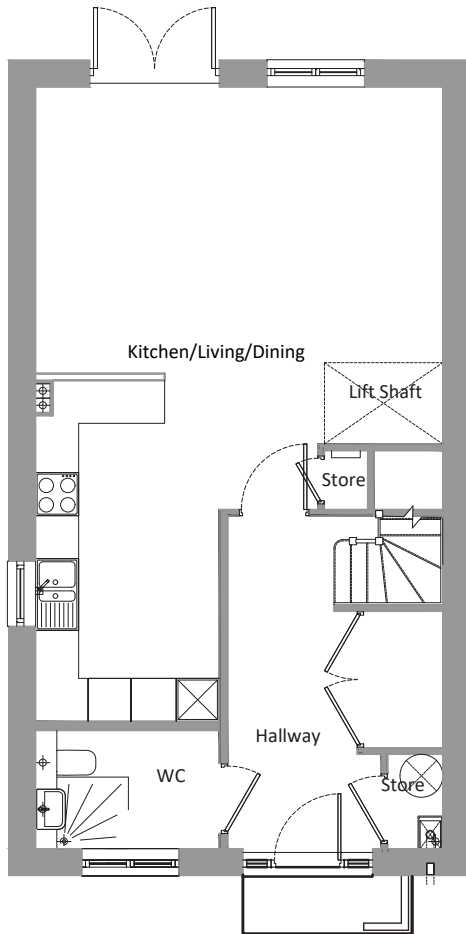
(Approximate dimensions)

HERON

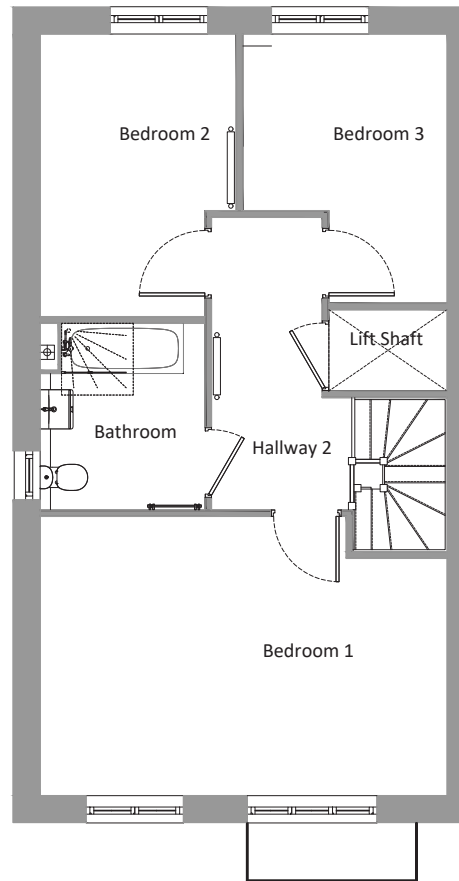


3 Bedroom home

Semi detached plots 824 (AS), 823 (OPP)



Ground floor



First floor

Ground floor

Kitchen / Dining / Living

5.73m x 8.96m

WC

1.70m x 2.60m

First floor

Bedroom 1

5.73m x 3.94m

Bedroom 2

3.97m x 2.79m

Bedroom 3

2.89m x 3.79m

Bathroom

2.63m x 2.34m

Total floor area 121m²

(Approximate dimensions)

*Window may be omitted on certain plots. Speak to sales officer for details.

Abbreviations: AS - As shown on floor plan / OPP - opposite hand to floor plan. All images used are for illustration purposes.

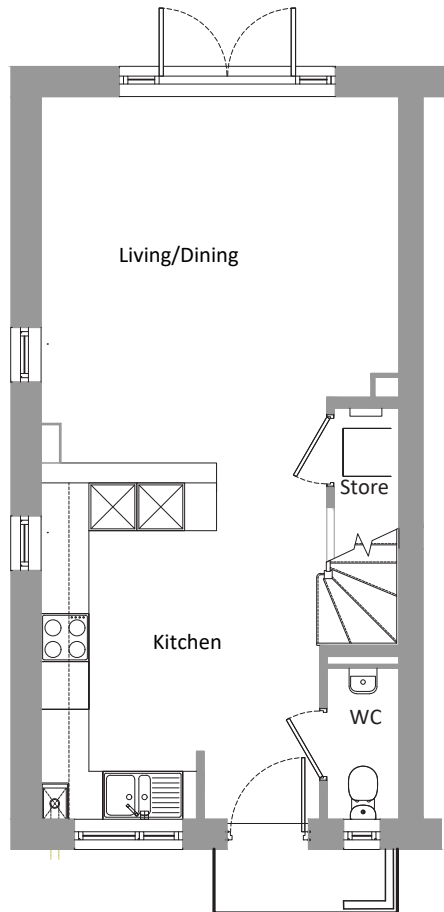
Disclaimer: These and the dimensions given for this house type and individual properties may differ. Please check with your sales officer in respect of individual properties. We give maximum dimensions within each room which includes areas of fixtures and fittings. These dimensions should not be used for carpet or flooring sizes, appliances spaces or items of furniture. All images, photographs are not intended to be relied upon to form part of, any contract unless specifically incorporated in writing into the contract.

FULMAR

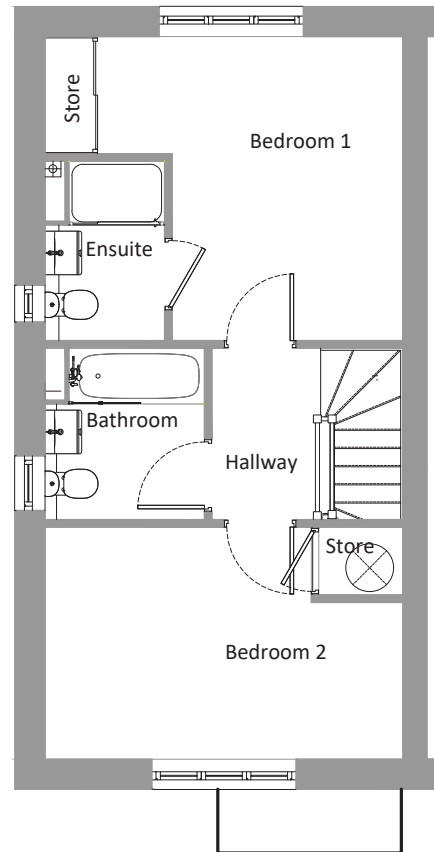


2 Bedroom home

Semi detached plots 691,728,730 (AS), 692,727, 729, 733-734 (OPP)
Terrace plots 843-845 (OPP)



Ground floor



First floor

Ground floor

Kitchen / Dining / Living

4.54m x 8.43m

WC

0.94m x 2.15m

First floor

Bedroom 1

4.54m x 3.83m

Bedroom 2

4.54m x 2.95m

Bathroom

2.19m x 2.04m

Total floor area 81m²

(Approximate dimensions)

*Window may be omitted on certain plots. Speak to sales officer for details.

Abbreviations: AS - As shown on floor plan / OPP - opposite hand to floor plan. All images used are for illustration purposes.

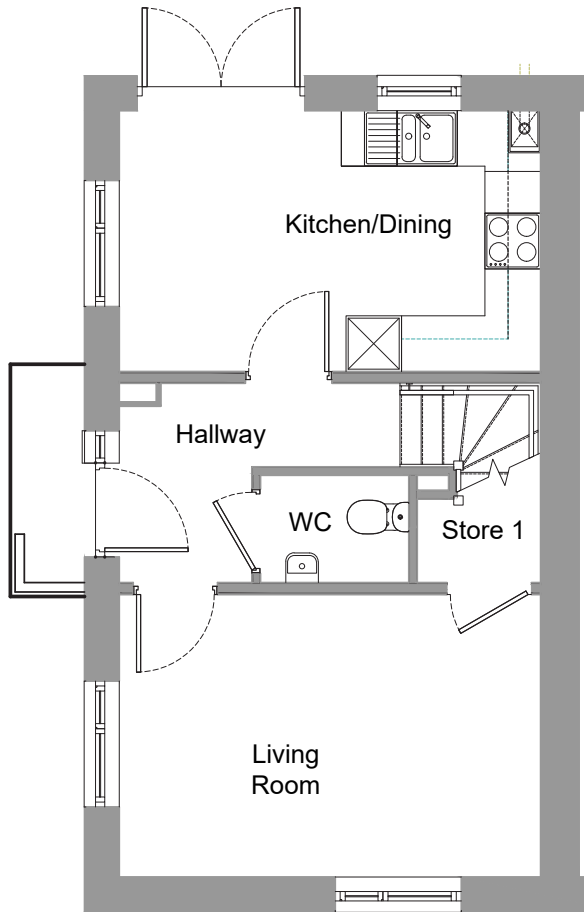
Disclaimer: These and the dimensions given for this house type and individual properties may differ. Please check with your sales officer in respect of individual properties. We give maximum dimensions within each room which includes areas of fixtures and fittings. These dimensions should not be used for carpet or flooring sizes, appliances spaces or items of furniture. All images, photographs are not intended to be relied upon to form part of, any contract unless specifically incorporated in writing into the contract.

DUNLIN

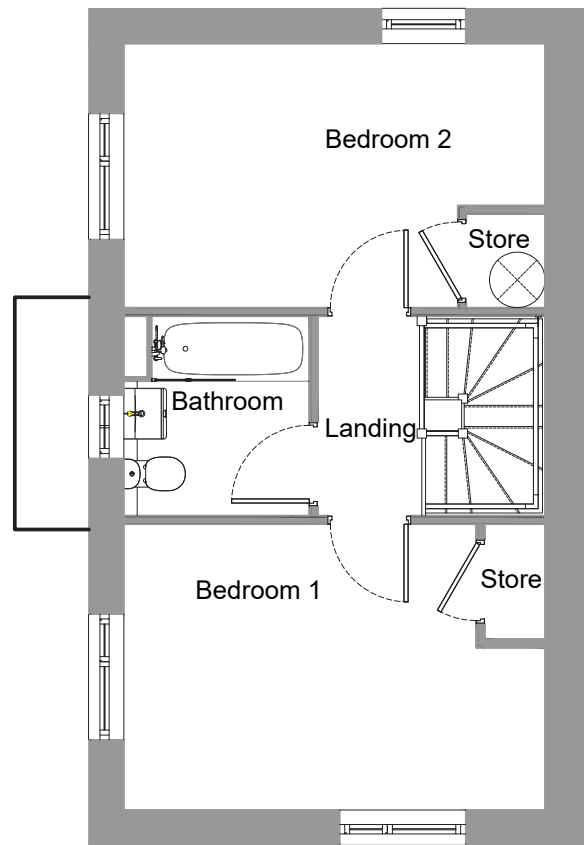


2 Bedroom home

Semi detached plots 775 (OPP)



Ground floor



First floor

Ground floor

Lounge

4.60m x 3.15m

Kitchen/ Dining

4.60m x 2.85m

WC

1.63m x 1.20m

First floor

Bedroom 1

4.60m x 3.11m

Bedroom 2

4.60m x 2.85m

Bathroom

2.04m x 2.19m

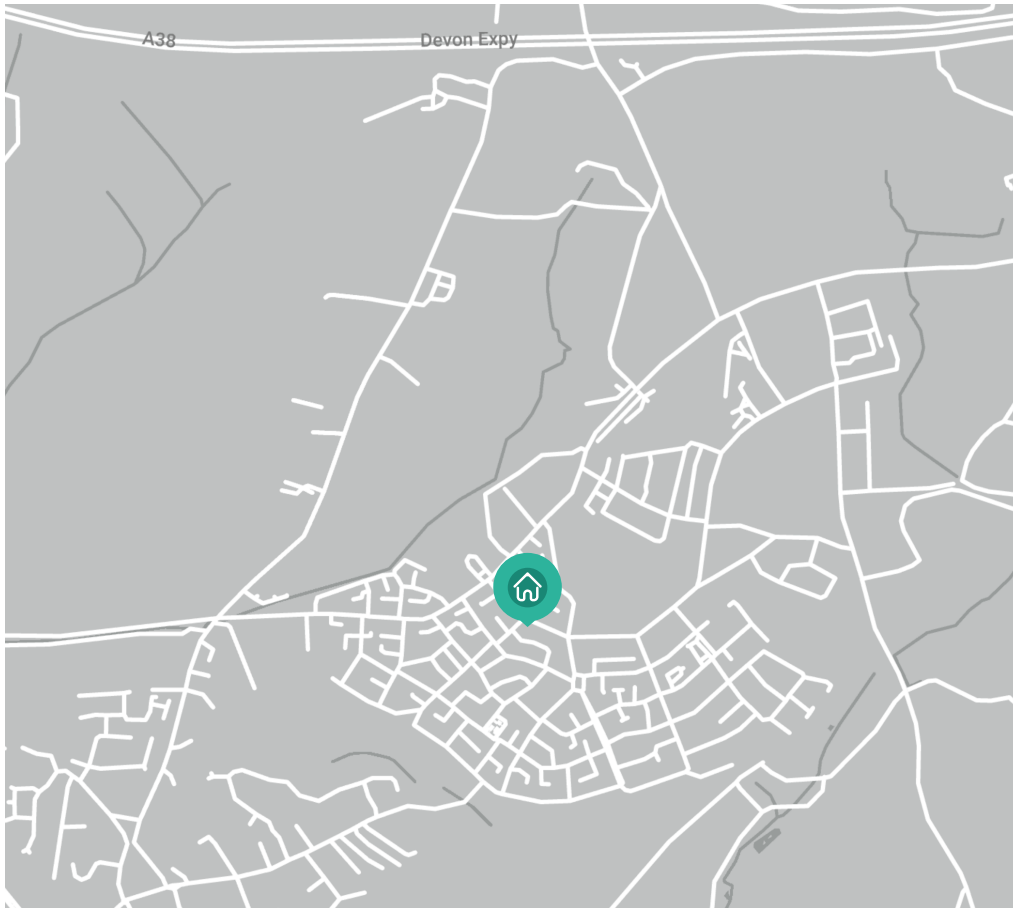
Total floor area 75m²

(Approximate dimensions)

*Window may be omitted on certain plots. Speak to sales officer for details.

Abbreviations: AS - As shown on floor plan / OPP - opposite hand to floor plan. All images used are for illustration purposes.

Disclaimer: These and the dimensions given for this house type and individual properties may differ. Please check with your sales officer in respect of individual properties. We give maximum dimensions within each room which includes areas of fixtures and fittings. These dimensions should not be used for carpet or flooring sizes, appliances spaces or items of furniture. All images, photographs are not intended to be relied upon to form part of, any contract unless specifically incorporated in writing into the contract.



How to find **Oak Green**

Sherford Countryside 2D,
Aquila Drive,
Plymouth,
PL9 8WR

SO Living. Plumer House,
Crownhill, PL6 5DH

Opening times

Monday - Thursday 9am - 5pm
Friday - 9am - 4:30pm

 [so-living.co.uk](https://www.so-living.co.uk)

 0800 0778 748

 so-living@pch.co.uk

 [facebook.com/solvingplym](https://www.facebook.com/solvingplym)

 x.com/solvingplym

SO Living is part of Plymouth's largest affordable housing provider, Plymouth Community Homes.

For full terms and conditions, visit the SO Living website. Information correct at January 2025

