

The Sycamore

3 Bedroom Home



The Sycamore is a modern and spacious 3 bedroom home that combines quality with style, in a family friendly location.

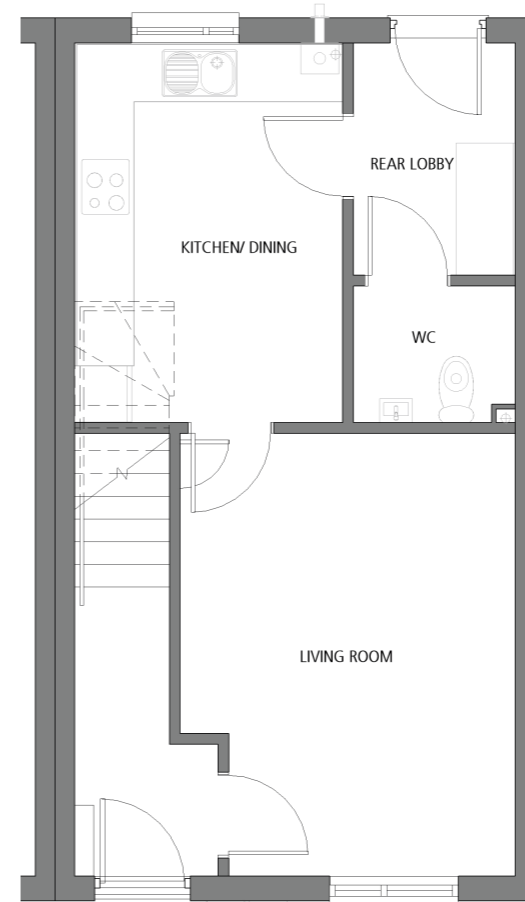
- Timber frame construction
- Central heating & double glazing
- Solar Panels*
- Allocated parking

The Sycamore

3 Bedroom Home

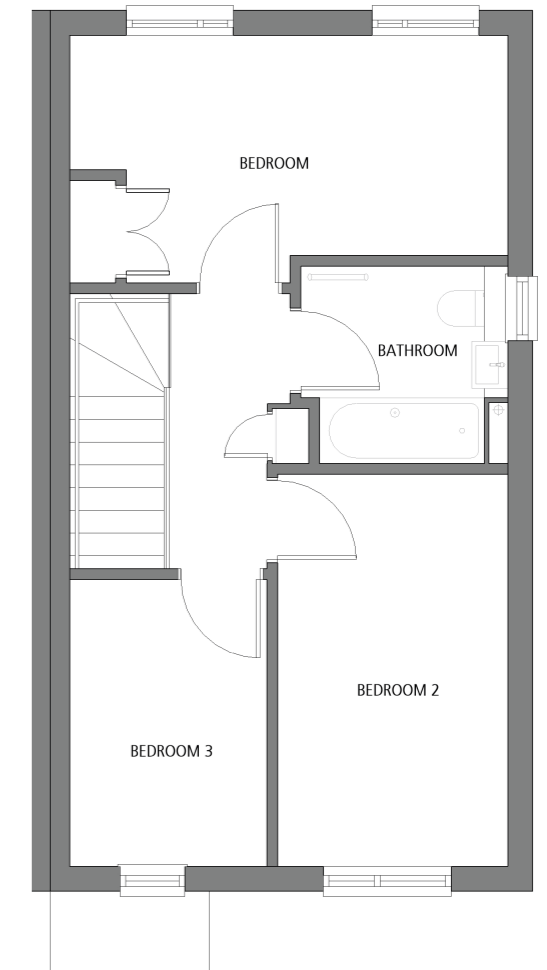
* The dimensions given below are for standard 3 bedroom house, The Sycamore. Some plots of this house type on this development are classified as Lifetime Homes.

For more information about the dimensions and plot numbers of The Sycamore Lifetime Homes at Primrose Park, please visit our website: so-living.co.uk.



Ground Floor Plan

Living room	3.55 x 4.7m	11'8" x 15'5"
Kitchen/Dining	2.85 x 4m	9'4" x 11"
WC	1.7 x 1.5m	5'7" x 4'11"
Rear Lobby	1.7 x 2.45m	5'7" x 8'



First Floor Plan

Double bedroom	4.65 x 2.65m	15'3" x 8'8"
Twin bedroom	2.45 x 4.15m	8' x 13'17"
Single bedroom	2.1 x 3.05m	6'10" x 10'
Bathroom	2.2 x 2.1m	7'3" x 6'10"

* Dimensions are approximate for standard house type.
* Solar Panels available on some plots.

Important Notice: The particulars listed in this document are for illustrative purposes only. We operate a policy of continuous product development, and individual internal and external features may vary. Consequently these particulars should be treated as general guidance only and cannot be relied upon as accurately describing any of the Specified Matters described by any Order made under the Property misdescription Act 1991. Nor do they constitute as a contract or warranty. All areas, dimensions and measurements shown are approximate, and should not be relied upon for carpet sizes, appliance spaces or items of furniture. In addition, the tenure plan does not form any part of the contract of sale.