



5 Norris Drive, PL6 6FU

Available from £40,000

1 bedroom shared ownership home

Make the dream of home ownership a reality with shared ownership

1 bedrooms

Gas Central Heating

1 allocated car parking space

Council Tax Band A

Full market value £160,000

Share 25%

Share price £40,000

Rent charge £329.72 p/m

Service charge £20.16 p/m*

Rent charge and service charges as of April 2025.

*estimated charges

The accommodation comprises...

This unique one-bedroom home offers open plan living with a downstairs WC and French doors leading to an enclosed patio area.

On the first floor there is a large main bedroom and contemporary bathroom. This home comes with plenty of storage space throughout and one allocated parking space, situated in the popular residential area of Southway.

Ground floor

Living / Kitchen 5.9m x 2.9m

Cloakroom 2m x 0.9m

First floor

Main Bedroom 3.8m x 2.9m

Bathroom 2m x 1.8m





Outside

Front

One allocated parking space.

Rear

Externally, the property has a private rear patio.

Other information

Lease details

The term of the lease for this property is 125 years from 12 June 2019

Builder Warranty

LABC Warranty expires 3 September 2030

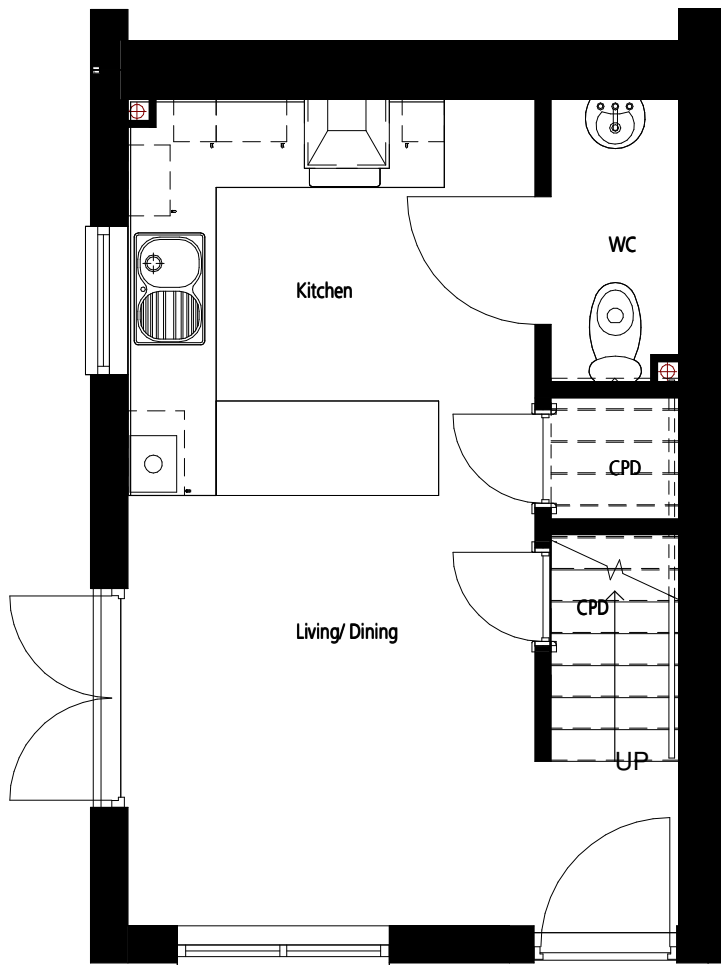
Energy Efficiency Rating

B

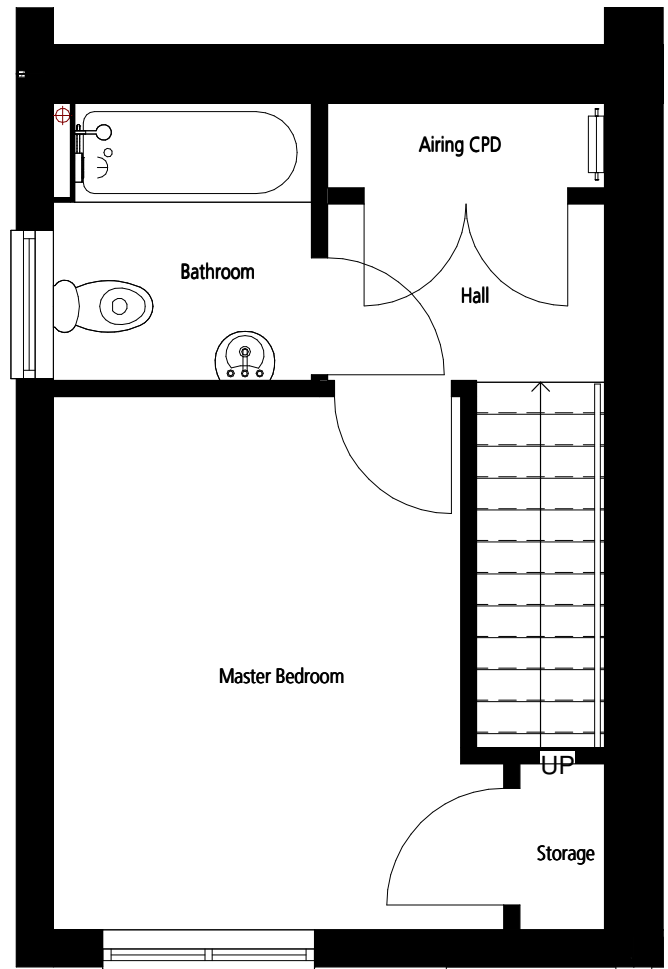
Score	Energy rating	Current	Potential
92+	A		99 A
81-91	B	83 B	
69-80	C		
55-68	D		
39-54	E		
21-38	F		
1-20	G		



Floorplan



Ground floor



First floor

Disclaimer: These particulars are issued in good faith and do not constitute representation or fact or form part of any contract or offer. These particulars should be independently verified by prospective buyers. Neither SO-Living, Plymouth Community Homes or any of its employees or agents has any authority to make or give any representation or warranty whatever in relation to this property, any floor plans are representation floor plans for visual purposes only. Please note that the size and position of objects such as doors and windows have not been measured and are not to scale. SO-Living/Plymouth Community Homes cannot be held responsible for inferences that may be drawn from these.

These particulars have been produced by SO Living on behalf of the vendor 17/03/2025.

Apply now at www.so-living.co.uk

