



Carpenter Way, PL19 0FL

Available from £102,000

2 bedroom shared ownership house

Make the dream of home ownership a reality with shared ownership

2 bedrooms

Gas Central Heating

2 allocated parking spaces

Council Tax Band B

How much does it cost?

Full market value £255,000

Share 40%

Share price £102,000

Rent charge 351.61 p/m

Service charge £17.97 p/m

Rent charge and service charges as of April 2024.

The accommodation comprises...

The ground floor leads you into a spacious open plan living area, perfect for contemporary family living and entertaining, with large front and rear windows allowing light to flood in.

The kitchen includes a stylish stainless-steel oven, hob and extractor fan whilst the rear lobby gives access to an enclosed garden and a handy cloakroom.

On the first floor, you will find both a sizeable master bedroom and a twin bedroom along with a modern, fully-fitted family bathroom.

There is plenty of storage throughout with a generous sized cupboard under the enclosed stairs and 2 additional cupboards on the first floor.

Ground floor

Open plan living

3.5m x 8.5m

Lobby

1.6m x 1.5m

Cloakroom

1m x 1.5m

First floor

Bedroom 1

3.4m x 4.5m

Bedroom 2

2.7m x 4.5m

Bathroom

2.2m x 1.8m

Lease details

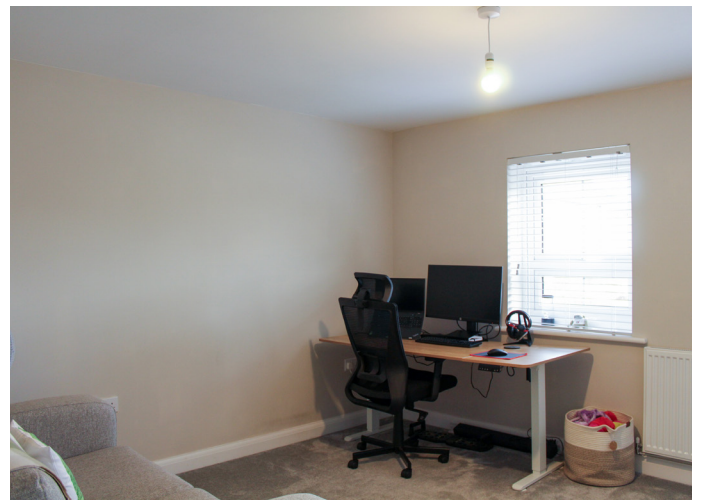
Lease of 125 years from 20 November 2020

Builder Warranty

NHBC warranty expires 24 March 2032

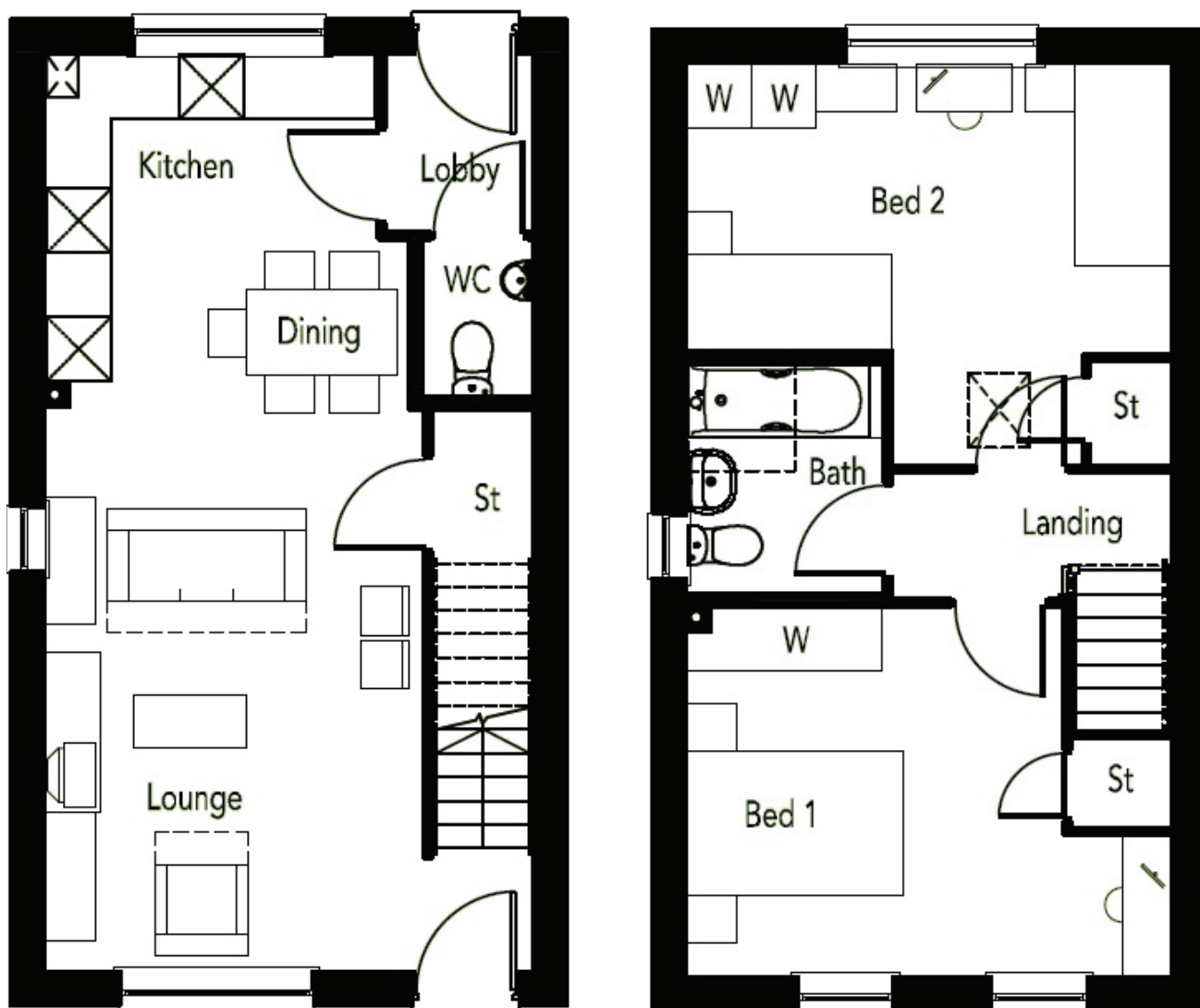
Energy Efficiency Rating

B



Score	Energy rating	Current	Potential
92+	A		96 A
81-91	B	84 B	
69-80	C		
55-68	D		
39-54	E		
21-38	F		
1-20	G		

Floor plan (handed)



Disclaimer: These particulars are issued in good faith and do not constitute representation or fact or form part of any contract or offer. These particulars should be independently verified by prospective buyers. Neither SO-Living, Plymouth Community Homes or any of its employees or agents has any authority to make or give any representation or warranty whatever in relation to this property, any floor plans are representation floor plans for visual purposes only. Please note that the size and position of objects such as doors and windows have not been measured and are not to scale. SO- Living/Plymouth Community Homes cannot be held responsible for inferences that may be drawn from these.

These particulars have been produced by SO Living on behalf of the vendor 18/11/2024

Apply now at www.so-living.co.uk

